

## ML241 Stainless Steel Soap Holder

### Material Specifications

- #304 Stainless Steel formed from single piece
- #7 Gauge Stainless Steel
- Rounded Corners and Edges for Safety

### Dimensions

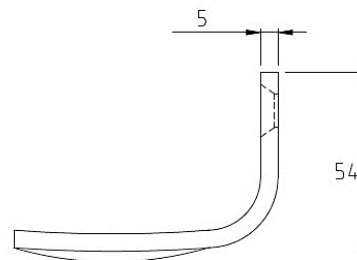
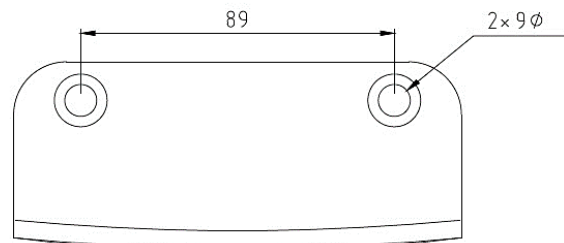
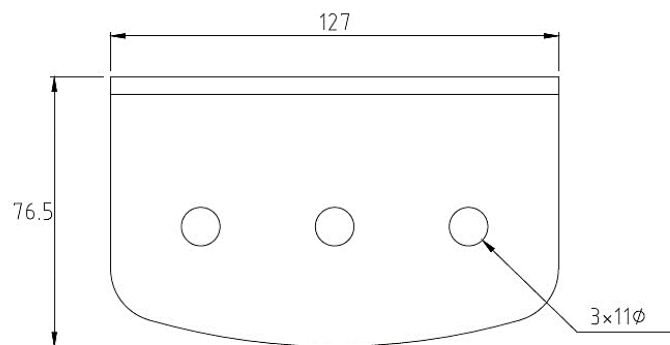
- 127mmW x 54mmH x 76.5mmD
- **Mounting:** 89mm C to C

### Installation Instructions

- *May be subject to Australian Building Code Regulations for able bodied and/or disabled use.*
  - *Fixings and anchors are not included with the units and are the responsibility of the installer to appropriately fix the unit to the wall.*
1. Locate fixing position on wall or tile and mark using mounting holes, ensuring holder is level.
  2. Drill holes and loosely secure unit to wall surface using appropriate screws and wall plugs.
  3. Check the unit is level and tighten security screws to finish installation.
- **Note:** Apply ample silicone around the fixings to avoid water ingress.

### Features

- 3 drip holes for draining
- Comes with x 2 Security Screws (Tamper Resistant)
- Designed to be fitted into a wall surface with solid substrate or, inclusion of noggins in cavity for a secure and rigid installation.



This product is AS1428.1 compliant (accessible compliant) when installed in accordance with the guidelines.

*The technical recommendations contained in this document are necessarily of a general nature and should not be relied on for specific applications without first securing competent advice. Whilst Metlam Australia Pty Ltd has taken all reasonable steps to ensure the information contained herein is accurate and current, it does not warrant the accuracy or completeness of the information and does not accept liability for errors or omissions. Any Commercial product should only be installed by a competent tradesperson and serviced/maintained by knowledgeable janitorial staff or competent people. Metlam Australia accepts no responsibility for any damage to product, walls or fixtures due to incorrect installation or maintenance of any of their products.*

The photographs and line drawings of the products presented above are representational only.  
Metlam Australia Pty Ltd reserves the right to, and from time to time, make changes and improvements in design and dimensions.